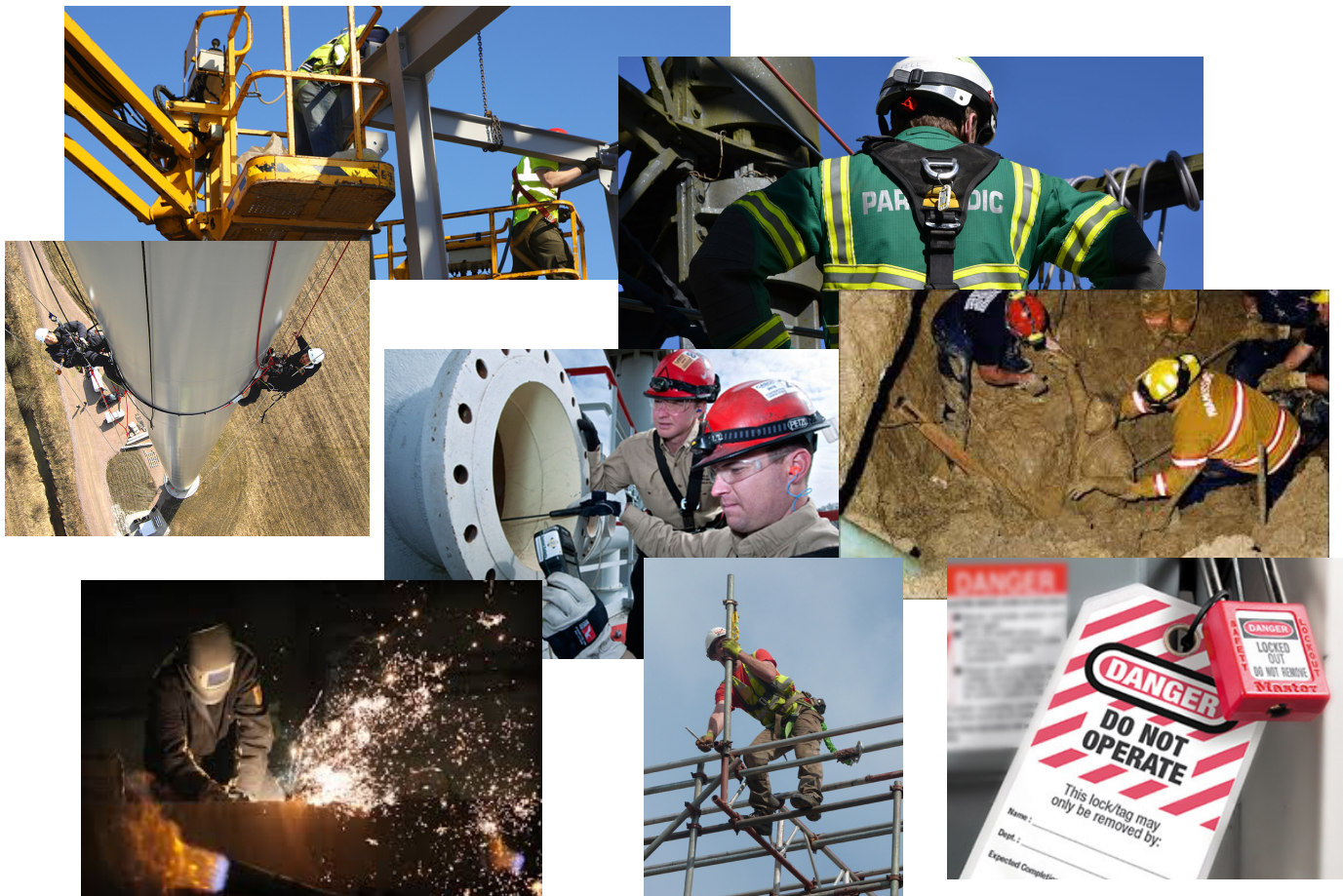


INDUSTRIAL PRACTICES

Are your managers equipped
to assess

The Health and Safety Risks
around Industrial Practices?



Are you tasked with overseeing contract work and responsible for ensuring safety and compliance across the raft of industrial practices? Managing the maintenance of a building or complex? Ensuring all are following best practice under health and safety?

The Health and Safety at Work Act 2015 is a work in progress with amendments, additional regulation updates and judicial precedence requiring constant attention to maintain compliance.

Are you taking all reasonable practicable steps?

THE INDUSTRIAL PRACTICE WORKSHOP:

Provides you with the opportunity to refresh your knowledge across the raft of industrial subjects that you are likely to encounter or have need to critique.

The Industrial Practice Workshop covers

- Working at Heights
- Confined Space
- Permit to Work
- Gas Testing
- Elevating Work Platforms
- Emergency Planning
- Excavations & Ground Disturbance
- Electrical Isolations
- Contractor Pre-qualification
- Roof Access
- Scaffolding
- Site Specific Safety Plans
- Health and Safety
- Specific Client Requirements

Our facilitator is recognised as an operational risk professional with practical experience across a wide range of industries.

He is a qualified **Health and Safety Practitioner** and a Lead Auditor of Safety Management Systems.

WHO WILL BENEFIT:

Quite simply there is no one that won't benefit from receiving an industry update.

In particular, anyone responsible for the **safety of public spaces**, buildings or project work.

If you're **unsure** of what to look for or what action to take if you find it.

The workshop will provide you with the **confidence and assurance** you are doing everything you can to keep safe.

If you are wishing to increase **your knowledge** of industrial practices, you will benefit from attending.

Workshop flexibility allows time to ebb and flow delivery to meet specific individual or group needs.

INDUSTRIAL PRACTICE INVESTMENT

The workshop is based on a minimum group rate of \$2,400 for up to ten participants.

Additional disbursements may apply for venue/travel/meals and accommodation.

FOR MORE INFORMATION, CONTACT:

Warwick Hall, Dip OHSM: warwick@safetysc.com: (+64) 021 633 128: www.safetysc.com

Note: Safety Set Consulting offers training as a service in the interest of encouraging and increasing safety.

Workshop completion signifies you have received this training. Safety Set Consulting does not represent or certify in any way the actual safety of any person or venue/infrastructure and assumes no responsibility as to the safety of any person.